

# Enerlites®

Control  
Charge  
Connect



2023/2024



## COMMERCIAL GRADE

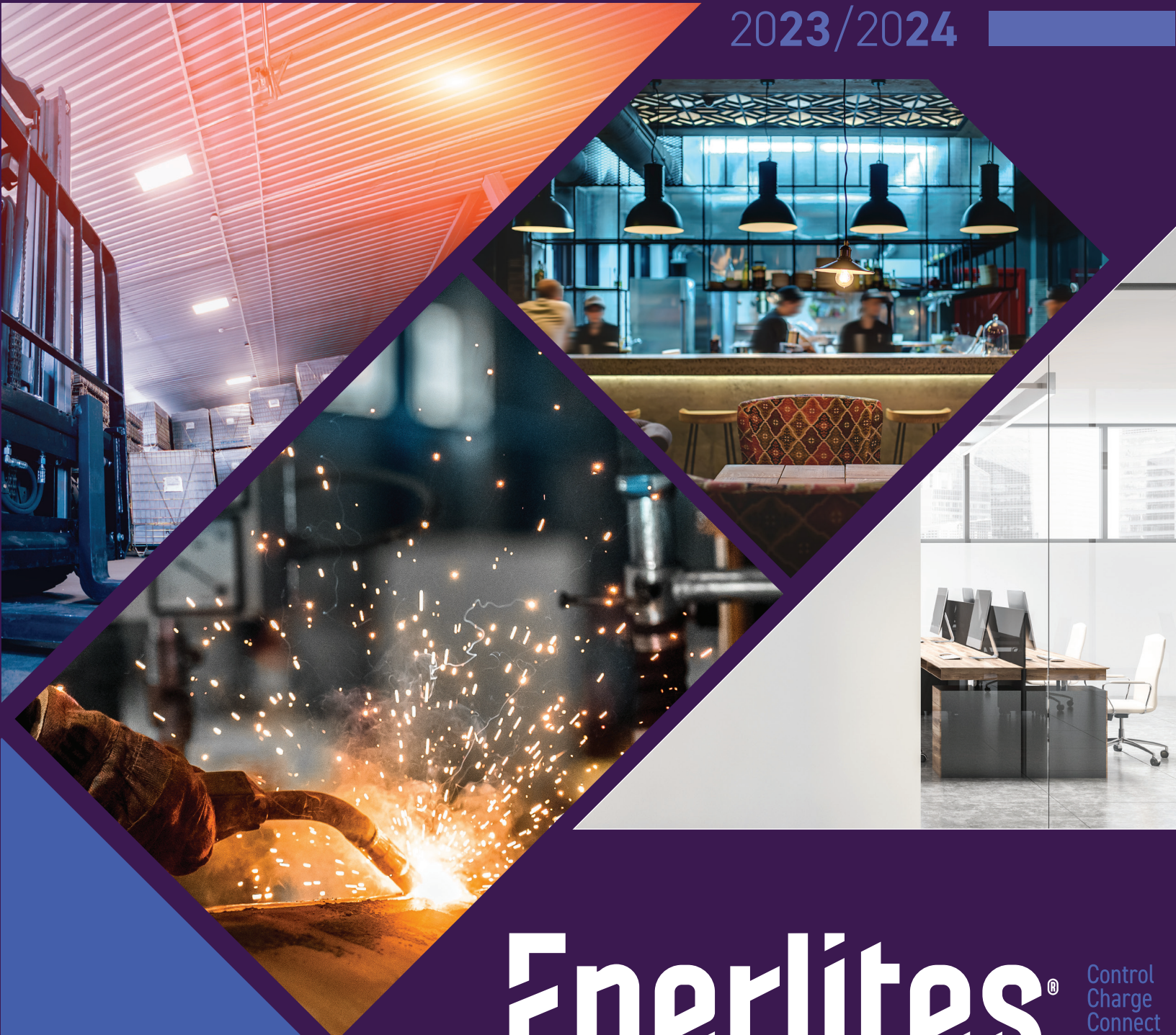
[enerlites.com](http://enerlites.com)



# COMMERCIAL GRADE



2023/2024



[enerlites.com](http://enerlites.com)

# Enerlites®

Control  
Charge  
Connect



# About Us

---

Enerlites, Inc. is an innovative designer and manufacturer of lighting controls and wiring devices.

Our headquarter is in the heart of Irvine, California and we have national and local distribution partners helping meet the needs of our growing customer base. As an engineering and design company, we are committed to delivering the safest and most **technologically advanced products, while offering the most competitive** prices on the market.

Innovative USB charger receptacles, advanced motion sensors, and streamlined USB floor boxes are some of the many energy saving and innovative solutions we provide. We continue to deliver innovative products with quality second to none.

**Enerlites' high quality and energy efficient products are ideal** for home builders, architects, electricians, developers, contractors and energy service organizations. We are confident that our products will meet your specifications, are easy to install, and can be operated by all professionals.

With over 700 products to choose from, you will find the perfect products for your residential, commercial, and industrial projects.

Control  
Charge  
Connect

**Enerlites**<sup>®</sup>



# About Us

Enerlites, Inc. is an innovative designer and manufacturer of lighting controls and wiring devices. Our headquarter is in the heart of Irvine, California and we have national and local distribution partners helping meet the needs of our growing customer base. As an engineering and design company, we are committed to delivering the safest and most technologically advanced products, while offering the most competitive prices on the market. Innovative USB charger receptacles, advanced motion sensors, and streamlined USB floor boxes are some of the many energy saving and innovative solutions we provide. We continue to deliver innovative products with quality second to none.

Enerlites' high quality and energy efficient products are ideal for home builders, architects, electricians, developers, contractors and energy service organizations. We are confident that our products will meet your specifications, are easy to install, and can be operated by all professionals. With over 700 products to choose from, you will find the perfect products for your residential, commercial, and industrial projects.

**Enerlites**<sup>®</sup> Control Charge Connect





# Floor Box

SQUARE SOFT POP-UP

**SOFT POP-UP FLOOR BOX ASSEMBLY WITH 20A, 125VAC GFCI RECEPTACLE**  
961248-S-GFCI



CARPET



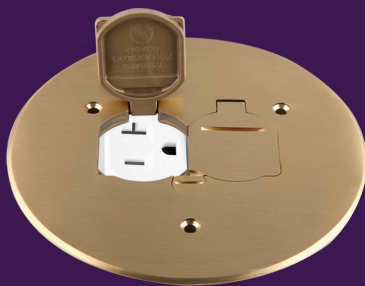
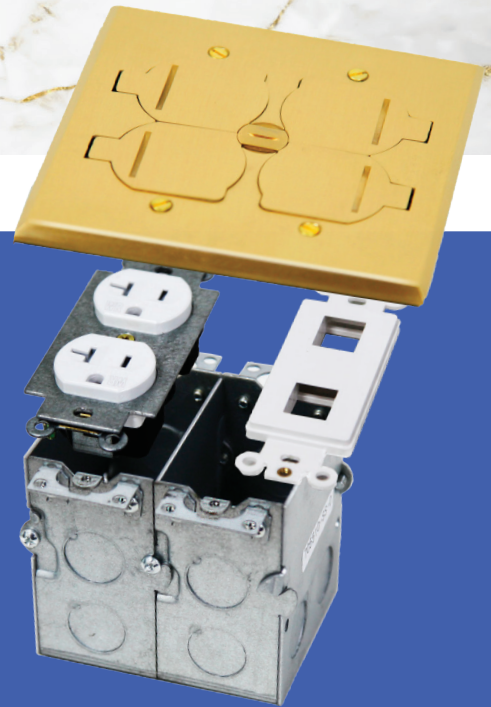
MARBLE



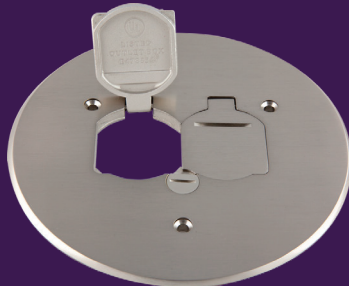
TILE



**SOFT POP-UP FLOOR BOX ASSEMBLY WITH 20A, 125VAC and 4.0A USB**  
961248-C-USB



**FLUSH ROUND LIP LID COVER PLATE**  
975517-C  
Tamper and Weather Resistant Receptacle



**FLUSH ROUND LIP LID COVER PLATE**  
975517-S  
Tamper and Weather Resistant Receptacle

**TWO GANG FLOOR BOX ASSEMBLY WITH FLIP LID COVER**  
20A Duplex Tamper & Weather Resistant Receptacle and Datacom  
975549-C-D



# Wiring Devices

**TAMPER-RESISTANT  
DECORATOR RECEPTACLE**  
62060-TR-W  
20A, 125VAC



**DUPLEX RECEPTACLE**  
62040-TR-W  
20A, 125VAC  
Tamper-Resistant



**EASY INSTALL**



**IDEAL RATING FOR  
COMMERCIAL  
APPLICATIONS**



**TESTING & CODE  
COMPLIANCE** 



**INDUSTRIAL GRADE  
LOCKING PLUG**  
66470-BK  
30A 125/250V NEMA

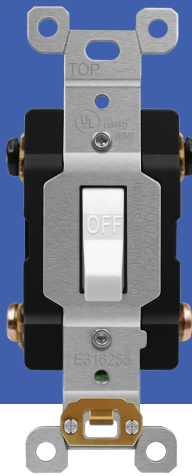




**COMMERCIAL TOGGLE SWITCH 20A, SINGLE POLE**  
81201-W



**INDUSTRIAL TOGGLE SWITCH 20A, DOUBLE POLE**  
82200-W



**20AMP SINGLE POLE QUIET DECORATOR SWITCH**  
91200  
**AND**  
**20AMP THREE-WAY**  
93200

**SINGLE POLE/3-WAY DIMMER SWITCH FOR 0-10 VOLT DIMMING**  
51300L



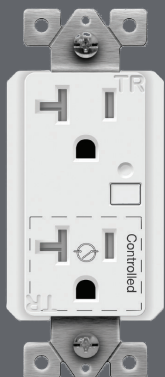
**WIRELESS PLUG LOAD**  
wireless ceiling sensor  
PLBPC



**WIRED PLUG LOAD RECEPTACLES**  
61570-TR-PLH  
15A duplex



**WIRED PLUG LOAD RECEPTACLES**  
62080-TR-PLH  
20A duplex



**PLUG LOAD CONTROL**  
tamper-resistant receptacle  
PL20R



**WIRED PLUG LOAD RECEPTACLES**  
63150-TR-PLH  
15A decorator



**WIRED PLUG LOAD RECEPTACLES**  
63200-TR-PLH  
20A decorator

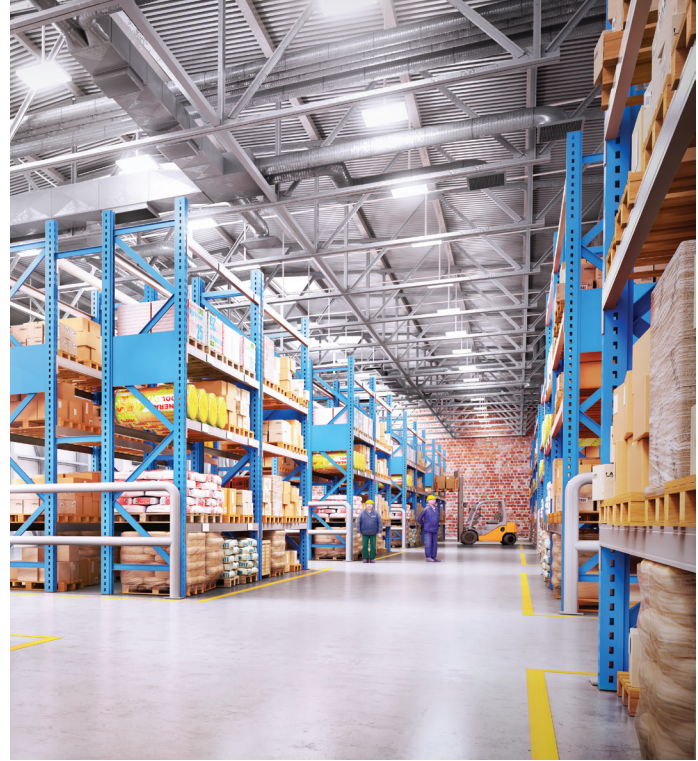




# Motion Sensors



**INDOOR DAYLIGHT  
HARVESTING SENSOR - 24V**  
MPL-010



MOTION DETECTION

**OCCUPANCY/VACANCY SENSOR  
WITH 0-10V DIMMER SWITCH**  
DWODS-010

Light level and sensitivity  
settings are adjustable  
Neutral Wire Required



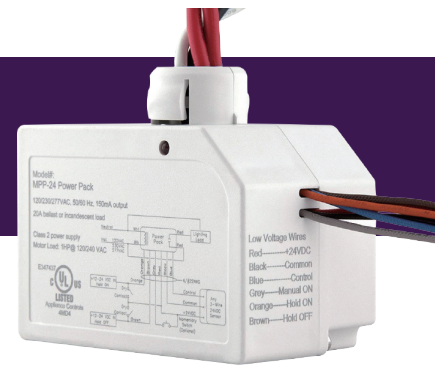
**PASSIVE INFRARED LINE  
VOLTAGE OCCUPANCY  
SENSOR**  
MPW-J

Single Pole  
Secure Ground Required  
Fully adjustable settings  
via DIP switch to perfectly  
meet application's needs  
Up to 900 sq. ft  
range of coverage.



**180° DUAL-TECHNOLOGY  
OCC/VAC MOTION SENSOR  
WALL SWITCH**  
MWOS-W

Neutral Wire Required  
Voltage: 120/277VAC, 60Hz  
Incandescent: 800W @ 120VAC, 60Hz  
Fluorescent: 800VA @  
120VAC/1600VA @ 277VAC, 60Hz  
Motor: 1/4HP, 120VAC, 60Hz



**24 VOLT POWER PACK**  
MPP-24

Line Voltage  
20A ballast / incandescent.  
Up to 1 horsepower  
at 120/240 VAC







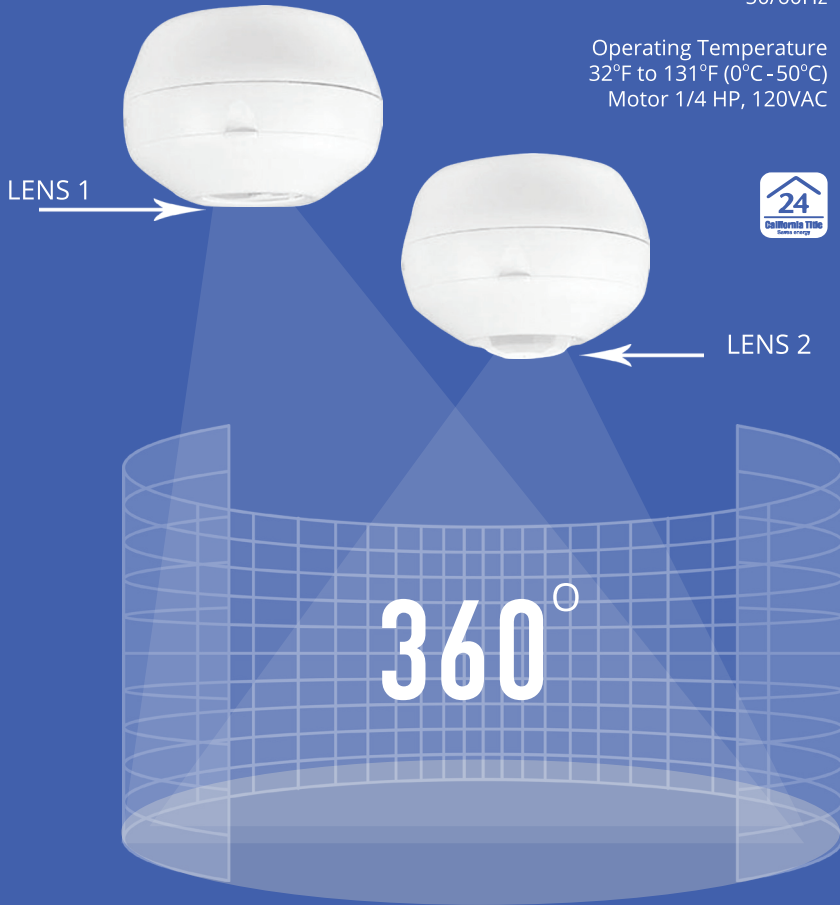
Warehouse

# Ceiling Sensors

Comes with 2 lenses  
 L1: 50ft, 2800 sq.ft  
 L2: 8ft, 1200 sq.ft

Fluorescent/ballast  
 800W @ 120VAC  
 1200W @ 277VAC  
 50/60Hz

Operating Temperature  
 32°F to 131°F (0°C - 50°C)  
 Motor 1/4 HP, 120VAC



**MPC-50HD**

WITH 0-10VOLT DIMMING  
 LINE VOLTAGE  
 LIGHT LEVEL SENSOR



**MPC-50H**

HIGH BAY PASSIVE INFRARED (PIR)  
 OCCUPANCY SENSOR

Manufacturing



**LOW VOLTAGE  
 OCCUPANCY SENSOR**  
 MDC-50L  
 Dual-Technology  
 PIR/Ultrasonic

Requires MPP-24 Power Pack



**PIR OCCUPANCY SENSOR**  
 MPC-50V

Line Voltage  
 Light Level Sensor

# USB Charging



**DUAL USB TYPE-C/TYPE-A  
CHARGER DUPLEX RECEPTACLE  
5.8A**  
20Amp, 125VAC  
62001-TR2USB-1A1C-W



**INTERCHANGEABLE MODULE  
USB CHARGER**  
61200-TR3USB-CU

Single 20 Amp  
Tamper-Resistant Receptacle  
20 Amp  
125 VAC  
USB: 5VDC, 5.8 Amp

[www.enerlites.com](http://www.enerlites.com) | [sales@enerlites.com](mailto:sales@enerlites.com)

Tel: (949) 756-0536 Fax: (949) 756-0528

connect with us >>   

Enerlites, Inc. All rights reserved.  
Products, product images, and product specifications are subject to change.  
Enerlites is not responsible for inadvertent errors.

