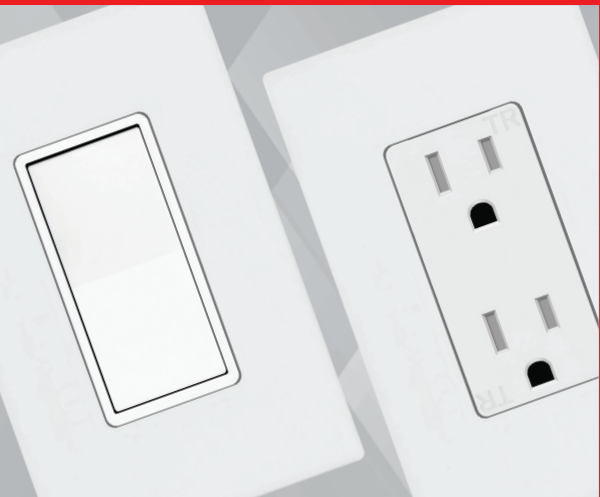
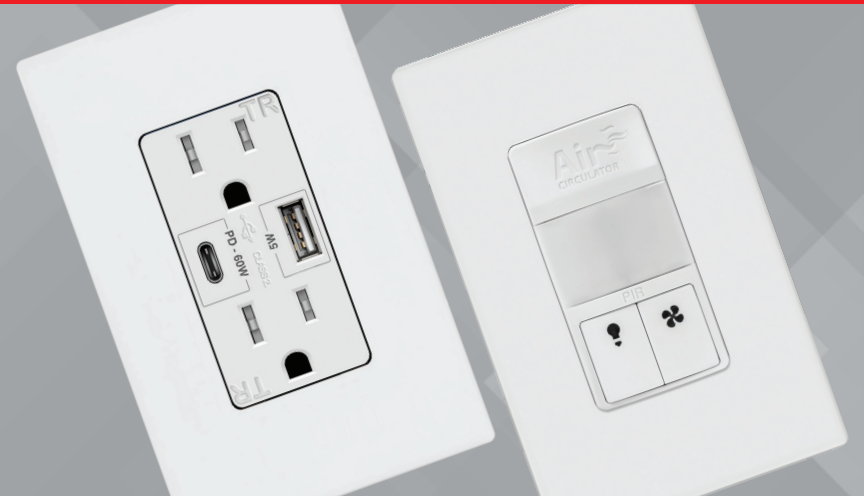


**LIGHTING CONTROLS & WIRING DEVICES**

**2022-2023**





## ■ ABOUT ENERLITES

We are a leading manufacturer of innovative sensors, lighting controls, USB charging receptacles, and wiring devices with over a decade of experience in design and manufacturing. Our product line includes patented devices that have high energy efficiency, quality, and apply cutting-edge technology. Our production facilities are among the most modern and technically advanced. They include an onsite lab certified for testing to UL standards. Our commitment to quality and safety is second to none. Every unit is thoroughly inspected throughout the manufacturing process and all applicable products are CA Title 20 and 24 certified, UL or ETL listed, and meet applicable NEC codes.

## ■ ASSOCIATIONS

We are an active member of NEMA, helping to develop and maintain high standards in electrical manufacturing and promote the safe use of certified lighting control and wiring devices. As a proud member of NEMRA, we provide our team with powerful industry-specific tools and stay on top of market trends to properly react to changing customer needs.

## ■ SUPPORT

The Enerlites team is dedicated to supporting every facet of the customer experience. We ensure that every inquiry is handled with professionalism and care. Our hands-on customer service team promptly and thoroughly handles all inquiries.

## ■ APPROACH

Customer needs and evolving technology standards are the driving forces of innovation and production at Enerlites. We design with our customers in mind, whether they be homeowners using their latest smart devices or desiring to integrate lighting controls to businesses that seek energy efficiency through lighting sensors or who want to offer an enhanced customer experience through the latest, fastest, USB charging systems. Our products answer to functionality and aesthetic appeal. We listen to the needs of our customers to ensure complete satisfaction.

## ■ PRODUCTS

Enerlites leads the market in USB charging devices. We set the market standards for the safest and fastest in-wall USB receptacles to date. With the integration of Qualcomm's Quick Charge technology and Power Delivery through USB-C, we are equipped to handle the most modern devices at top speeds. Beyond speed and reliability, Enerlites' USB charging devices cater to heavy use in residential and commercial applications. Interchangeable modules allow for quick changes with minimal effort and cost. Interchangeable face covers give worn outlets an immediate face lift and come in various colors to complement a room.

Dual technology sensors combine Passive Infrared Technology with Ultrasonic Sensors in our switches to enhance accuracy and detect fine motion. We offer various combinations with different levels of customization settings for broad appeal in residential and commercial applications. This hands-free option promotes energy efficiency and convenience.

# Table of Contents



## A USB CHARGER RECEPTACLES

Interchangeable Type-A Module USB	A-3~A-4
Standard Type-A USB	A-5
Interchangeable Module USB	A-6
Type-A/C USB	A-7
Power Delivery USB	A-8
4-Port USB	A-9



## B SENSING CONTROLS

Wall Switch Sensors	B-4~B-6
Line Voltage Sensors	B-7~B-9
Low Voltage Sensors	B-10~B-11
Power Pack and Adapters	B-12
Humidity Sensors	B-13
Fresh Air Circulator & Fan Control	B-14



## C PLUG LOAD CONTROLS

Wireless Plug Load Controls	C-3
Tamper-Resistant Plug Load Receptacles	C-4



## D TIMER SWITCHES

Programmable Timer Switches	D-3
Preset Timer Switches	D-4~D-5



## E DIMMERS AND FAN SPEED CONTROLS

Incandescent Dimmer Switches	E-3
LED Dimmer Switches	E-4
Fan Speed Controls	E-5



## F STRAIGHT BLADE DEVICES

Residential Grade	F-3~F-4, F-8
Industrial Grade	F-5~F-6, F-9
Isolated Ground	F-10
Tamper & Weather Resistant	F-11~F-12
30 & 50 Amp Power Devices	F-13~F-15
Surge Suppressors	F-16



## G SWITCHES

Toggle Switches	G-3~G-4
Decorator Switches	G-5
Manual Motor Switches	G-6



## H COMBINATION DEVICES

Combination Devices	H-2
Guide Light Devices	H-3



## I LOCKING DEVICES

NEMA 15 Amp Locking Devices	I-5
NEMA 20 Amp Locking Devices	I-5~I-6
NEMA 30 Amp Locking Devices	I-7
NEMA Straight Blade Devices	I-9



## J FLOOR BOXES AND COVERS

One-Gang Flush Floor Boxes	J-3
Two-Gang Flush Floor Boxes	J-4
Kits	J-5~J-7
Floor Box Covers and Flanges	J-8
Floor Junction Boxes and Accessories	J-9



## K DATA-COM DEVICES & WALL PLATES

Audio/ Video Connectors	K-2
Decorator Adapters	K-3
Multimedia Wall Plates	K-4
Recessed Cable Plates & Mounting Brackets	K-5
Molded-In Voice and Audio/Video	K-6
Telephone Wall Jacks	K-7
Telephone and CATV Jacks	K-8



## L WALL PLATES & COVERS

Screwless Wall Plates	L-3~L-5
Blank Wall Plates	L-6
Plastic Wall Plates	L-7~L-12
Stainless Steel Wall Plates	L-13~L-17
Weatherproof Covers & Boxes	L-18~L-20



## M HOME AUTOMATION

Z-Wave Smart Devices	M-3
Wi-Fi Smart Devices	M-4



## N ELITE SERIES

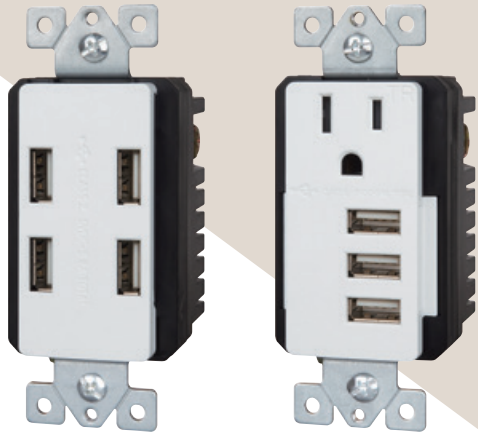
Decorator Receptacles and Switches	N-2
Decorator Combination Devices and USB	N-3
Screwless Wall Plates	N-4



# USB CHARGER RECEPTACLES

ENERLITES offers a wide variety of in-wall USB charging receptacles, with multiple configurations to choose from. Options include devices that combine USB ports with 15A or 20A plug outlets, as well as interchangeable modules and devices that feature fast charging technology. Our Quick-Charge 3.0 and Power Delivery charging technology supplies a higher level of charging power for supported devices.

With an in-wall USB receptacle, you can enjoy the convenience of adapter-free USB charging. AC adapters are no longer required, simply plug your cable into the USB port and start charging. Designed to replace any traditional wall outlet, our USB receptacles eliminate the unpleasant clutter of bulky AC adapters and maintain organization in your home or office.



Interchangeable Type-A Module USB	.....	A2-A3
Standard Type-A USB	.....	A4-A8
Interchangeable Face Cover USB	.....	A9
Power Delivery USB	.....	A4-A8
4-Port USB	.....	A9

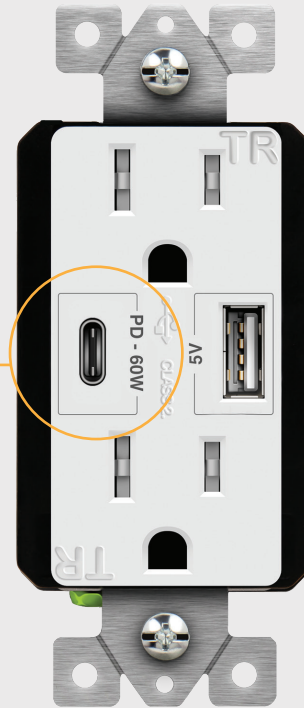


# Charge Devices Faster than Ever with Power Delivery

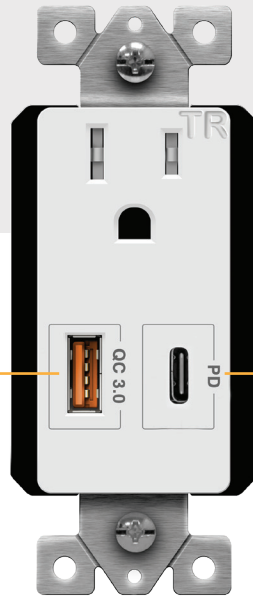
This technology allows users to charge most smartphones, tablets, and even select laptops at optimized speeds and efficiency.

## The New Standard for Fast Charge Technology

Up to 60W with a USB-C Cable / Up to 18W with a USB-C Cable

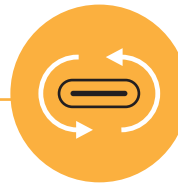


61501-1A1C-60PD



TU115QC3PD

Quick-Charge 3.0



Power Delivery charging technology

Reversible USB-C Charging Port



## SENSING CONTROLS

ENERLITES offers a wide variety of in-wall and ceiling-mounted sensor controls for lights and fans.

The line includes both Passive Infrared (PIR) and PIR/Ultrasonic motion sensor switches, as well as humidity sensors, fresh air circulators, and multi-technology devices that utilize more than one of these features.



Wall Switch Sensors	.....	B4-B9
Line Voltage Sensors	.....	B10
Low Voltage Sensors	.....	B11

Room Controls	.....	B12-B15
Power Pack and Adapters	.....	B16-B17
Humidity Sensors	.....	B4-B9
Fresh Air Circulator & Fan Control	.....	B10



# Occupancy and Vacancy Sensors

Our sensor-controlled devices are designed to reduce energy consumption and bring convenience to a variety of residential, commercial, and industrial applications.



MWOS-W



MPL-010



MPC-50HD



Passive Infrared (PIR) and PIR/Ultrasonic motion sensor



DWHOS



DWOS-J-W



Hands-free control



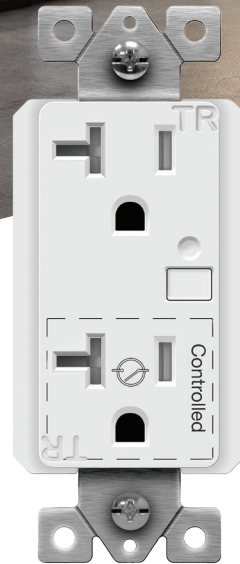
30-40% Energy savings



# PLUG LOAD CONTROLS

ENERLITES plug load control devices offer high-quality control in a user-friendly package. The line includes both tamper-resistant and wireless control receptacles, which can be connected to either a switch or ceiling sensor for extended appliance control.

Plug load control requirements are driven by expanded codes and standards with the common goal of energy efficiency.



Wireless Plug Load Controls	.....	C4
Tamper-Resistant Plug Load Receptacles	.....	C5



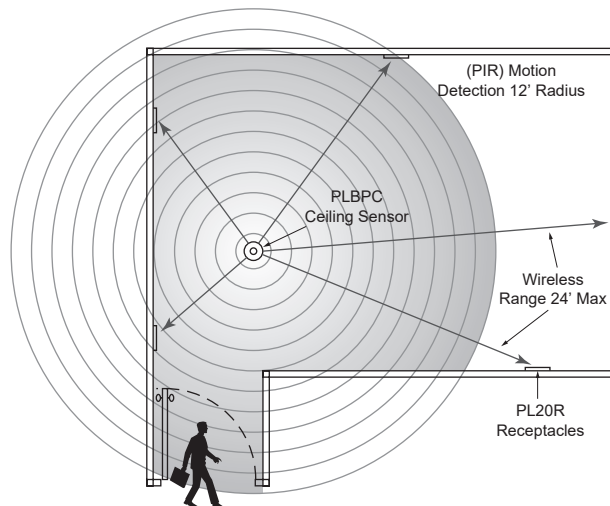
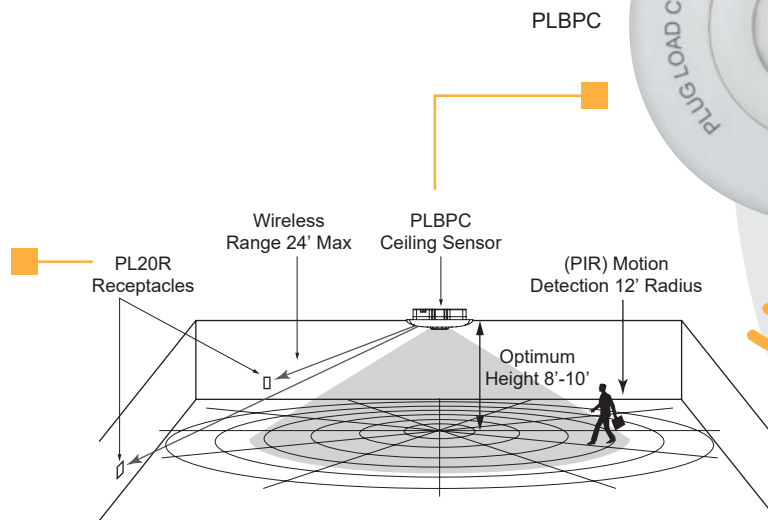
# Wireless PIR Coverage

The PL20 and PLBPC are control devices to help make plug load controls easy to implement and operate. The controlled plug load will turn ON when motion is detected by the ceiling sensor and will turn OFF 30 minutes after the room is vacated, turning off any device that is no longer needed. The PIR sensor is battery operated so there is no need for expensive in-wall wiring between the sensor and receptacles.

Our plug load control receptacles are designed to replace a standard wall outlet and they comply with California Title 24. We offer both 15A and 20A options to suit a wide range of applications in residential, commercial, and industrial settings



PL20R





# TIMER SWITCHES

ENERLITES timers are designed and built to meet a high standard of innovation, quality, and energy conservation. The line includes in-wall timer switches that feature either preset or 7-day programmable timer controls.

Programmable digital timers may also include features such as daylight savings, random mode, and astronomic settings.



HET01-H

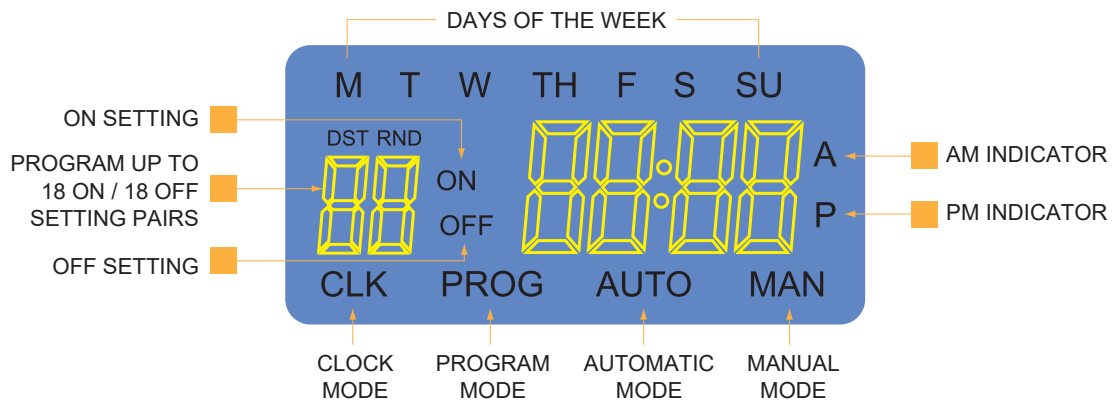


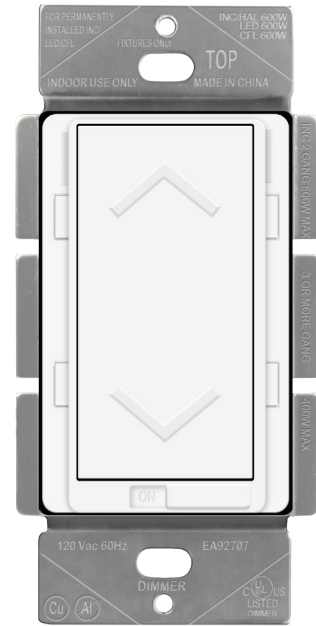
HET06A-R

Programmable Timer Switches .....	D5
Preset Timer Switches .....	D6

# Timers

Timer switches replace a standard wall switch to allow for better management of interior/exterior lighting, holiday lighting, security lighting, exhaust fans, and small appliances. All timer switches comply with California Title 24.





57302-W

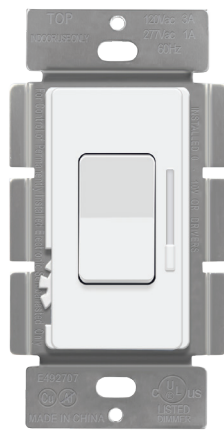
## DIMMERS AND FAN SPEED CONTROLS

ENERLITES lighting dimmers and fan speed controllers are used to create the ideal atmosphere for any occasion. Dimmer switches and fan speed controllers are both designed to replace a standard wall switch and they allow the user complete control over light levels or ceiling fan speed.

We offer dimmer switches for both LED and incandescent lights, as well as combination switches for controlling both lights and fans from the same wall location. These devices offer both convenience and control, making them perfect for a range of residential and commercial applications.

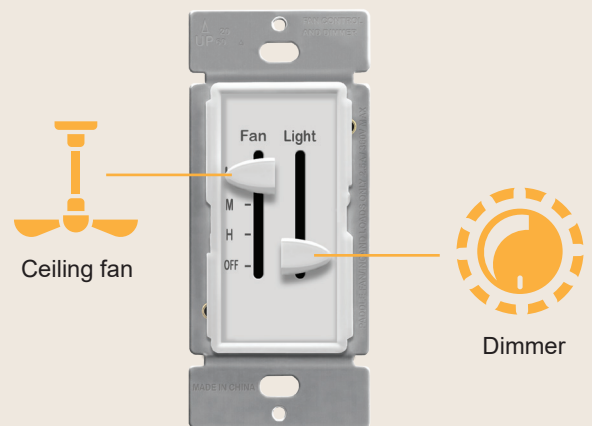


17001-F3-W



51300L-W

Incandescent Dimmer Switches	.....	E10
LED Dimmer Switches	.....	E11
Fan Speed Controls	.....	E12





# STRAIGHT BLADE DEVICES

ENERLITES offers a full line of 15A, 20A, 30A, and 50A straight blade receptacles available in residential, commercial, and industrial grades. The line includes both duplex and decorator style outlet receptacles, single standard receptacles, weather resistant receptacles, child-safe tamper-resistant receptacles, surge suppressors, and heavy-duty receptacles designed for large appliances such as a range or an electric car.

Each of our straight blade devices is precision-manufactured using the finest materials and tested to the highest standards to ensure a long service life and user-friendly design. All straight blade devices are designed in compliance with National Electric Code requirements to ensure safety in all types of applications.



66500-BK



66300-BK



61501-TR-W



TGTRSS215R

### Features and Benefits:

- Excellent performance and longevity
- Permanent installation with continuous protection
- Tamper-resistant safety shutters on select devices
- Different wiring options to suit different applications
- A wide variety of colors with matching wall plate options
- All straight blade receptacles are UL listed

Standard Receptacles	.....	F3	Tamper-Resistant Recessed Receptacles	.....	F10
Decorator Receptacles	.....	F4-F5	30 & 50 Amp Power Devices	.....	F11-F12
Weather-Resistant Receptacles	.....	F6-F9	Surge Suppressors	.....	F13-F14

# Straight Blade Devices

Automatic grounding clip provides safe ground continuity between strap and metal enclosure - eliminates having to ground bonding jumper wire

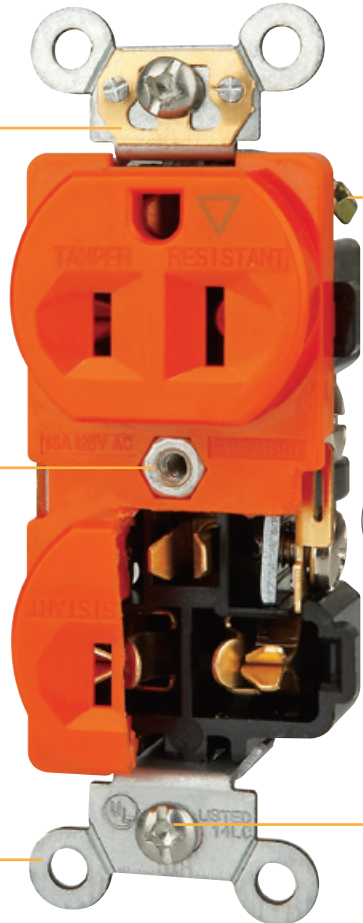
Side located grounding screw backed out and ready to wire

Nut captures the wall plate and provides grounding and firm attachment of transformers or appliances

One-piece, triple-wipe brass line contacts superior design for minimum heat rise, maximum plug retention

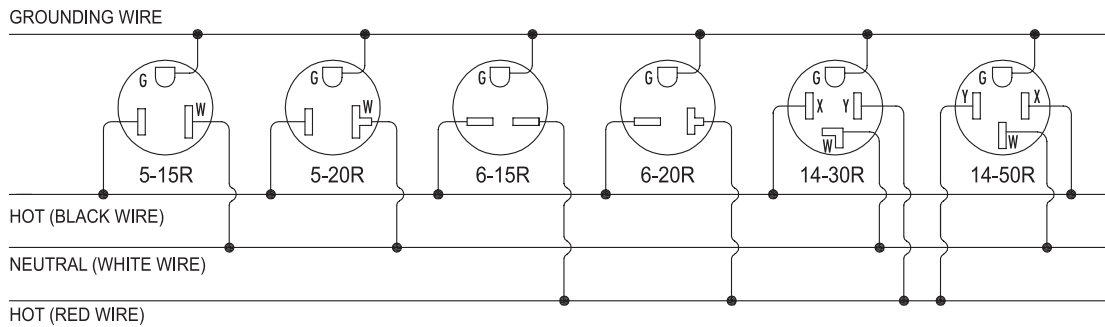
Thick 1.2mm plated steel strap withstands abuse

Slotted and Phillips screw heads offer greater installation flexibility



61510-O

## Wiring Diagrams: Single Pole, Double Pole, 3-Way, 4-Way





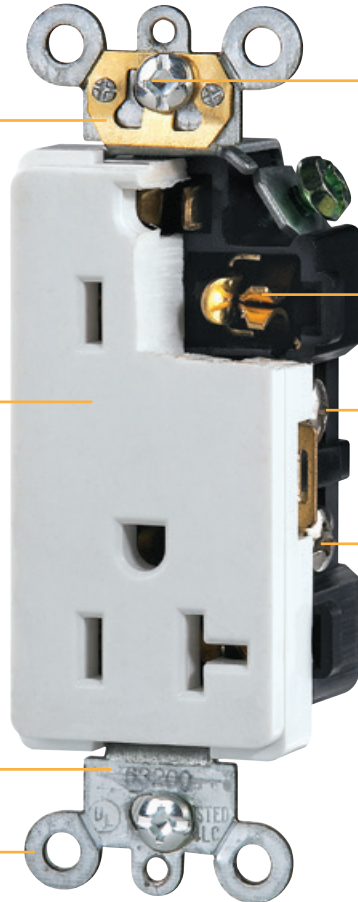
# Straight Blade Devices

Dual grounding options:  
grounding terminal and/or  
self-grounding clip

High-impact resistant  
thermoplastic face and back  
body eliminates cracks,  
breaks and callbacks

Longest, broadest mounting  
strap for the best possible  
reach to wall or panel surface

Break-off yoke tabs



Slotted and Phillips screw  
heads offer greater installation  
flexibility

Triple-wipe brass contacts for  
long service life

Back wire terminals accept #12  
or #14 solid or stranded copper  
or copper clad wire

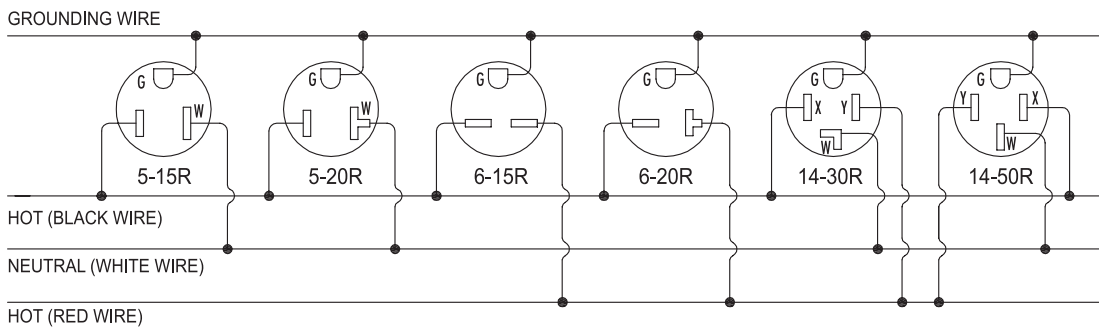
Side wiring holes accept #12 or  
#14 copper or copper clad wire

How to connect wires to  
screw terminals

How to connect wires  
with back fitting

63200-W

## Wiring Diagrams: Single Pole, Double Pole, 3-Way, 4-Way





# SWITCHES

ENERLITES provides a comprehensive line of 15A and 20A switches. The line includes both toggle and decorator style wall switches, with variations designed for single-pole, three-way, and four-way applications.

These switches are designed to replace a standard wall switch for an immediate upgrade. A full selection of switches is available in residential, commercial, and industrial grades. ENERLITES wall switches are manufactured to high-quality standards and thoroughly tested to ensure flawless electrical and mechanical performance.

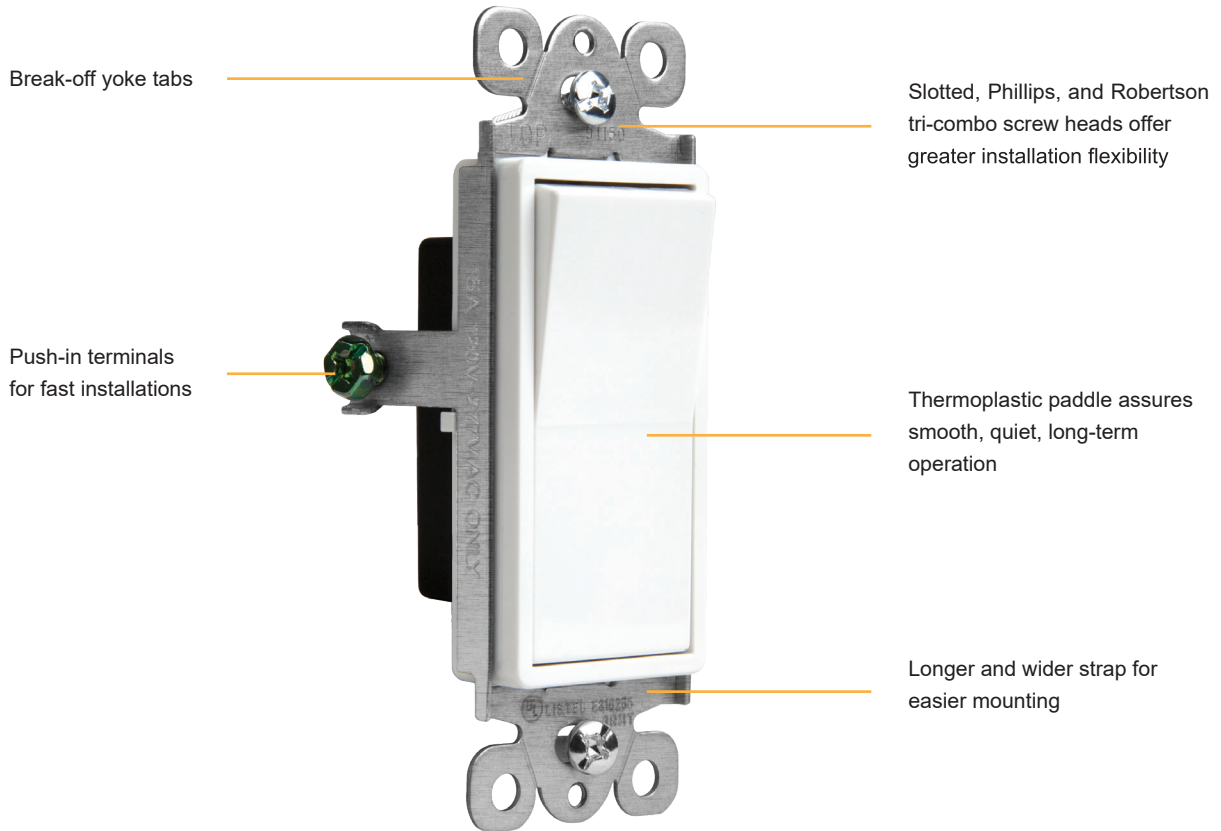


Toggle Switches	.....	G3
Decorator Switches	.....	G4-G5
Manual Motor Switches	.....	G6-G9



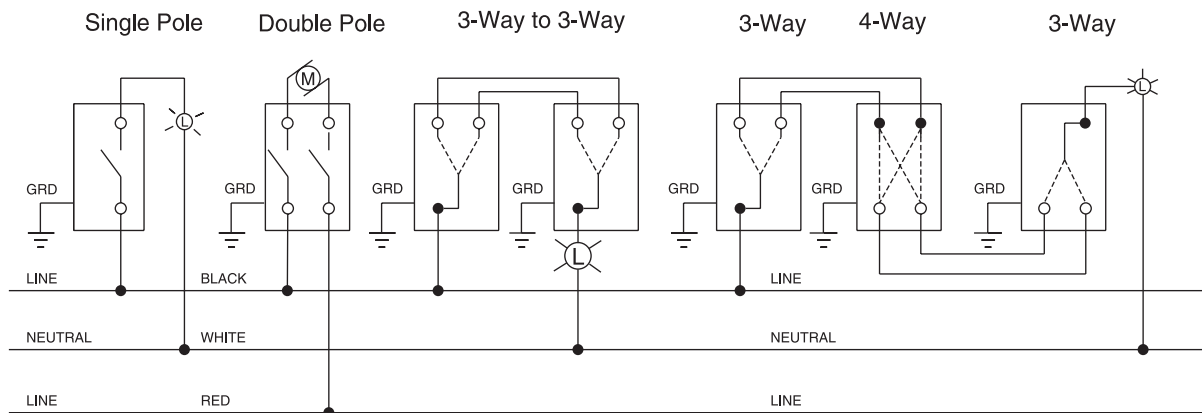


# Decorator Switches



91150-W

**Wiring Diagrams: Single Pole, Double Pole, 3-Way, 4-Way**





91150GL



62834-W

## COMBINATION DEVICES

ENERLITES provides a comprehensive line of 15A and 20A switches and combination devices, which offer multifunctionality in a compact package.

These single-gang in-wall devices are designed to replace a standard light switch or outlet receptacle to offer additional features. The line includes double and triple light switches, as well as switch/outlet combination devices and guide light devices.

Combination devices offer enhanced convenience and help users save space, making them perfect for most residential and commercial applications.

Standard	.....	H3
Decorator Devices	.....	H4-H5
Guidelight Devices	.....	H6-H9



66490-BK

## LOCKING DEVICES

ENERLITES industrial grade locking devices are built to provide unparalleled quality and superb performance in the most physically demanding environments.

The line includes a comprehensive selection of locking plugs and receptacles, as well as flanged inlets, outlets, and connectors all in industrial grade.

Available in 15A, 20A, and 30A variations, we offer locking devices in a wide range of configurations to suit virtually any industrial application.

### Features and Benefits:

- Durable and cost-efficient
- Ease of use for do-it-yourself installation
- All locking devices are UL listed



66492-BK



66470-BK



66493-W



66494-W

NEMA 15 Amp Locking Devices	.....	12-13
NEMA 20 Amp Locking Devices	.....	14-15
NEMA 30 Amp Locking Devices	.....	16-17
NON-NEMA Locking Devices	.....	18

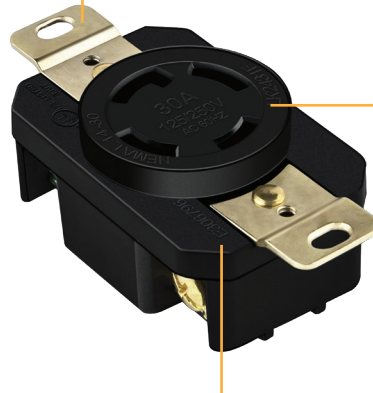
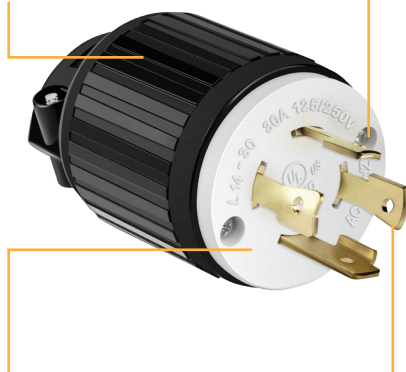


## Industrial Grade Locking Plugs & Receptacles

Impact resistant thermoplastic construction stands up to severe job site abuse

Captive, combination Phillips/Slotted assembly screws

Heavy-duty mounting straps are gold-plated to resist corrosion



NEMA line number and rating are molded into face for easy identification

Rating, voltage and NEMA line number imprinted on face

Solid brass blades are fitted and held tightly and securely in place

Impact resistant nylon face and body

## Industrial Grade Locking Flanged Inlets, Flanged Outlets, and Connectors

The nylon housing of insulated design shields exposed metal parts on hand-held side

The nylon housing of insulated design shields exposed metal parts on hand-held side

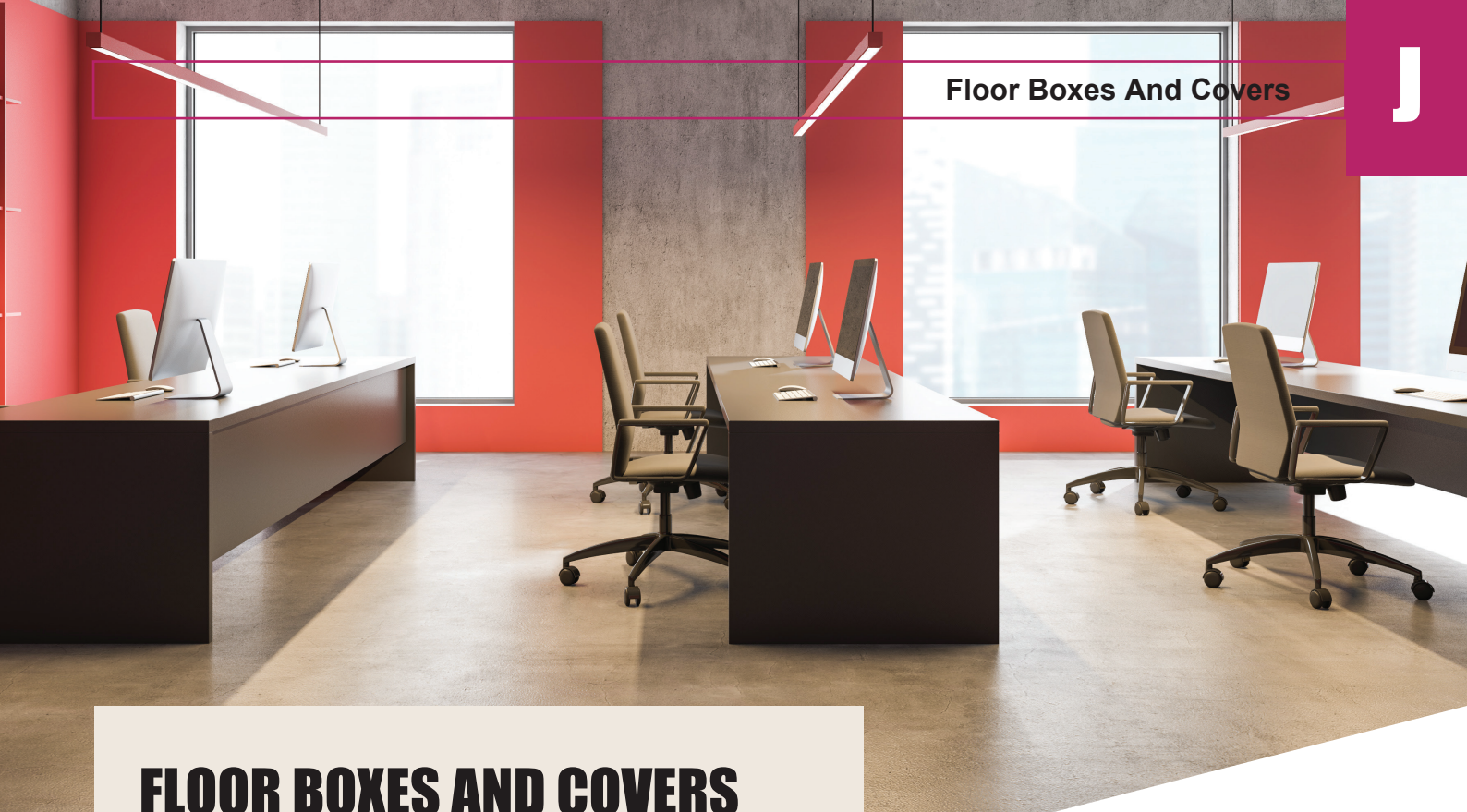
Impact resistant thermoplastic construction



The industrial strength contacts resist heat rise, provide excellent conductivity

Amperage, voltage and NEMA line number imprinted on face for easy identification

Captive, combination Phillips slotted assembly screws

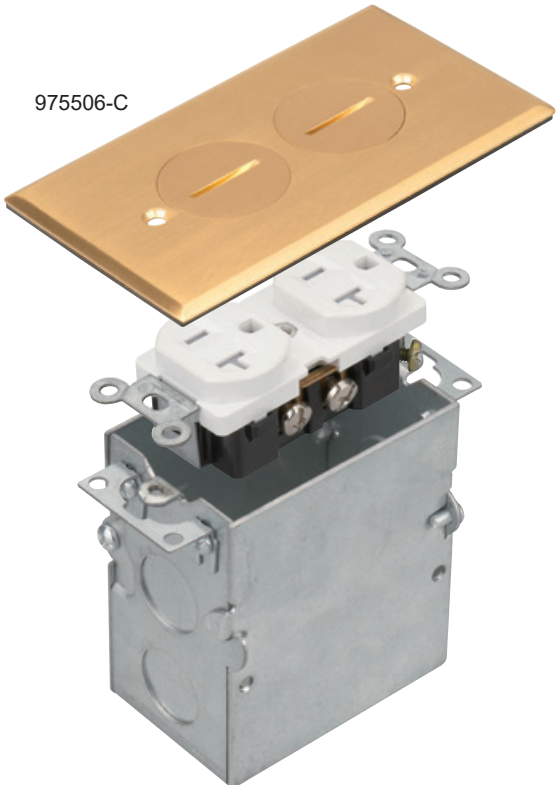


# FLOOR BOXES AND COVERS

ENERLITES floor boxes are an ideal solution for bringing power and communication into commercial and residential buildings. Designed with a metal cover that protects the receptacle from everyday foot traffic, these floor boxes are perfect for both wood and carpet applications. Backed by cutting-edge design and manufacturing, ENERLITES floor boxes blend seamlessly into their environments.



961501-S-USB



975506-C

Flush Floor Boxes	.....	J2-J3
Pop-up Floor Boxes	.....	J4-J5
Floor Box Covers and Flanges	.....	J6-J7
Floor Junction Boxes and Accessories	.....	J8



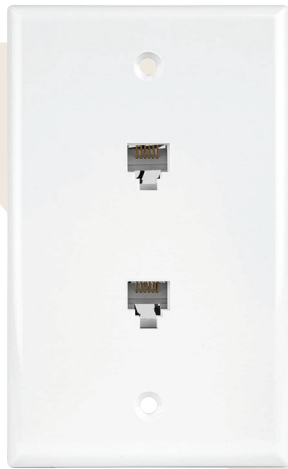
## High-Tech Electrical Floor Boxes

ENERLITES electrical floor boxes are constructed to give customers the ability to create personal solutions in their home or business by offering a complete variety of traditional floor box options. commercial and residential applications including wood and carpet floors. Backed by cutting edge design and manufacturing, ENERLITES floor boxes blend seamlessly into their environments. Match any room's design with a range of fitting styles, colors and finishes.

ENERLITES offers an expanded floor box line to provide industry-leading flexibility while accommodating an extensive range of applications. Match any rooms design with a range of fitting styles, colors, and finishes.



961248-C-USB

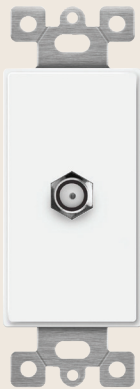


6671-W

## DATA-COM DEVICES & WALL PLATES

ENERLITES offers a complete line of data-com devices and wall plates for reliable, cabled connections. The line includes single and multi connectors as well as integrated wall jacks, pass-through wall plate inserts, keystone ports and modules, and various data-com wall plates.

Mix and match any keystone or simply select the right insert or wall jack to fit your need. When your business activity or home entertainment relies on an uninterrupted server connection, you can always count on cabled connections.

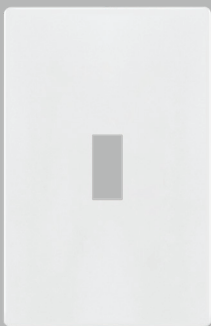


6505-W

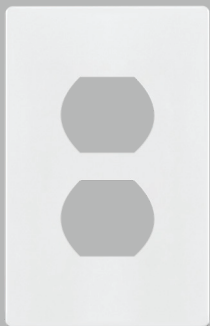


6506-W

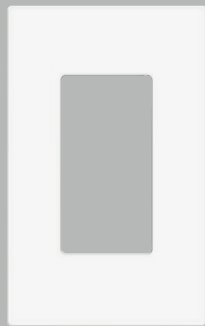
Audio/Video Connectors .....	K2
Decorator Adapters .....	K3
Multimedia Face Plates .....	K4
Recessed Cable Plates & Mounting Brackets .....	K5
Molded-In Voice and Audio/Video .....	K6
Telephone Wall Jacks .....	K7
Telephone and CATV Jacks .....	K8



SI8811-W



SI8821-W



SI8831-W

## WALL PLATES & COVERS

ENERLITES line of wall plates is designed and manufactured to address a wide range of residential, commercial, and industrial applications.

The line includes wall plates made of metal and polycarbonate materials, child-safe screwless wall plates, and weatherproof covers and enclosures.

Wall plates are available in a variety of configurations, colors, and finishes, as well as multi-gang combinations. In addition to the standard size, select wall plates are available in mid-size and oversized dimensions to cover varying amounts of wall space around the outlet.

ENERLITES wall plates are designed and built for heavy-duty, long-lasting applications.



IUC1V-D



EN1350

Screwless Wall Plates .....	L2
Plastic Wall Plates .....	L3
Stainless Steel Wall Plates .....	L4
Weatherproof Covers & Boxes .....	L5



## In-Use Extra-Duty Weatherproof Covers

Meets 2014 NEC 410-57 (B) (1) for Wet Locations and Extra-Duty Applications

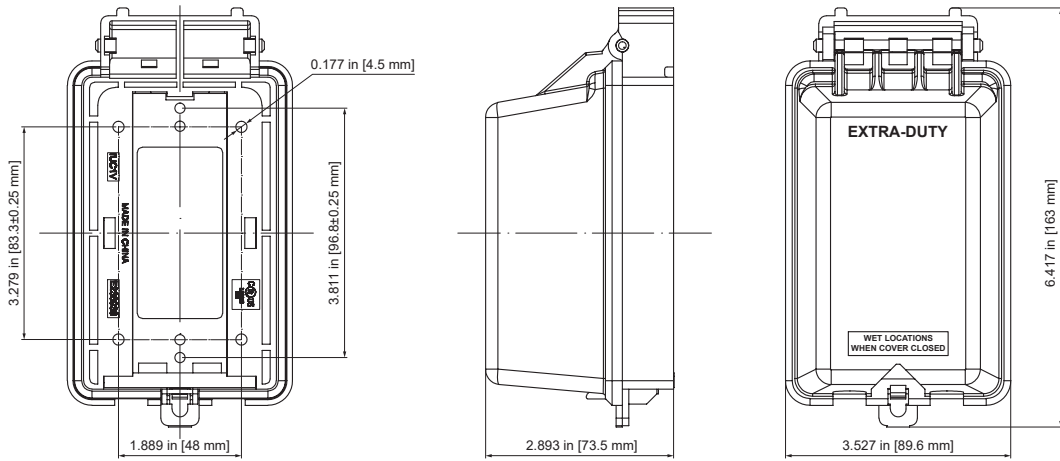
15 and 20A, 125 and 250V receptacles installed outdoors in wet locations shall have an enclosure that is weatherproof whether or not attachment plug cap is inserted.

**Features:**

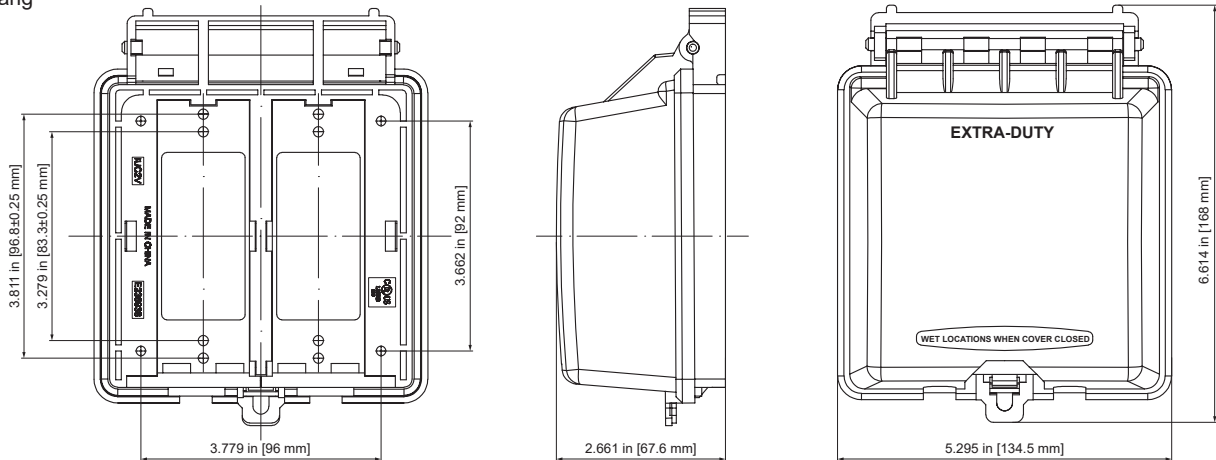
- Weatherproof
- Quick fit installs in seconds
- Maximum versatility
- Impact-resistant
- UV stabilized
- Non-conductive

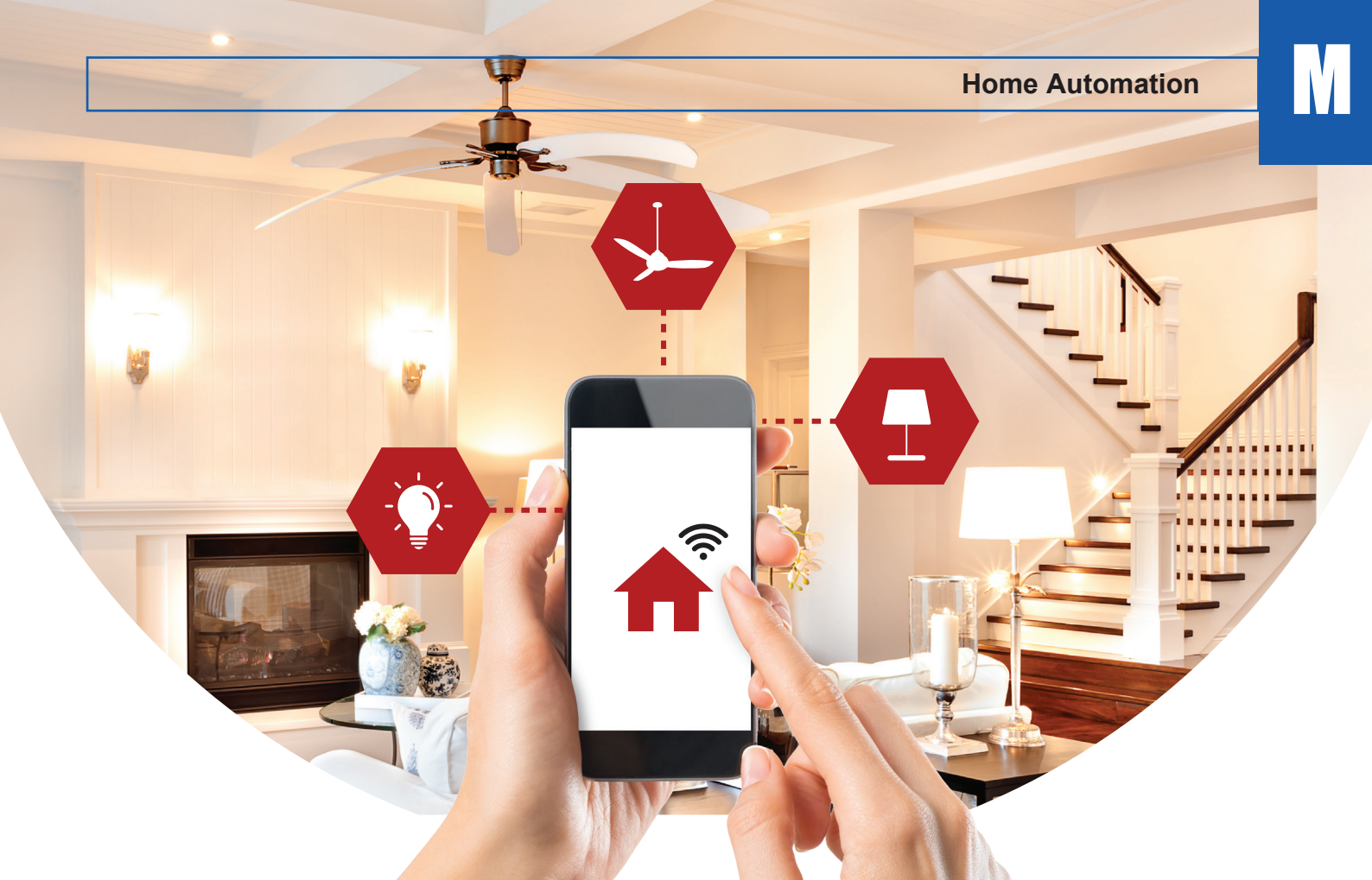


**1-Gang**



**2-Gang**





# HOME AUTOMATION

ENERLITES home automation devices bring your home into the modern age with customizable settings and remote control.

The line includes wall switches, receptacles, and modules that allow users to program their devices, set timers and schedules, create scenes by grouping devices together, and control all of these settings wirelessly. We offer WiFi-controlled devices that require a secure 2.4GHz wireless connection as well as Z-Wave devices that instead require connection to a Z-Wave Hub.

Both WiFi and Z-Wave devices can be controlled and managed from your mobile device with our user-friendly smartphone app.



ZW15RM-W



TGWF15S-W



TGWF500D-NEW-W

Z-Wave Smart Devices	.....	M2
Wi-Fi Smart Devices	.....	M3

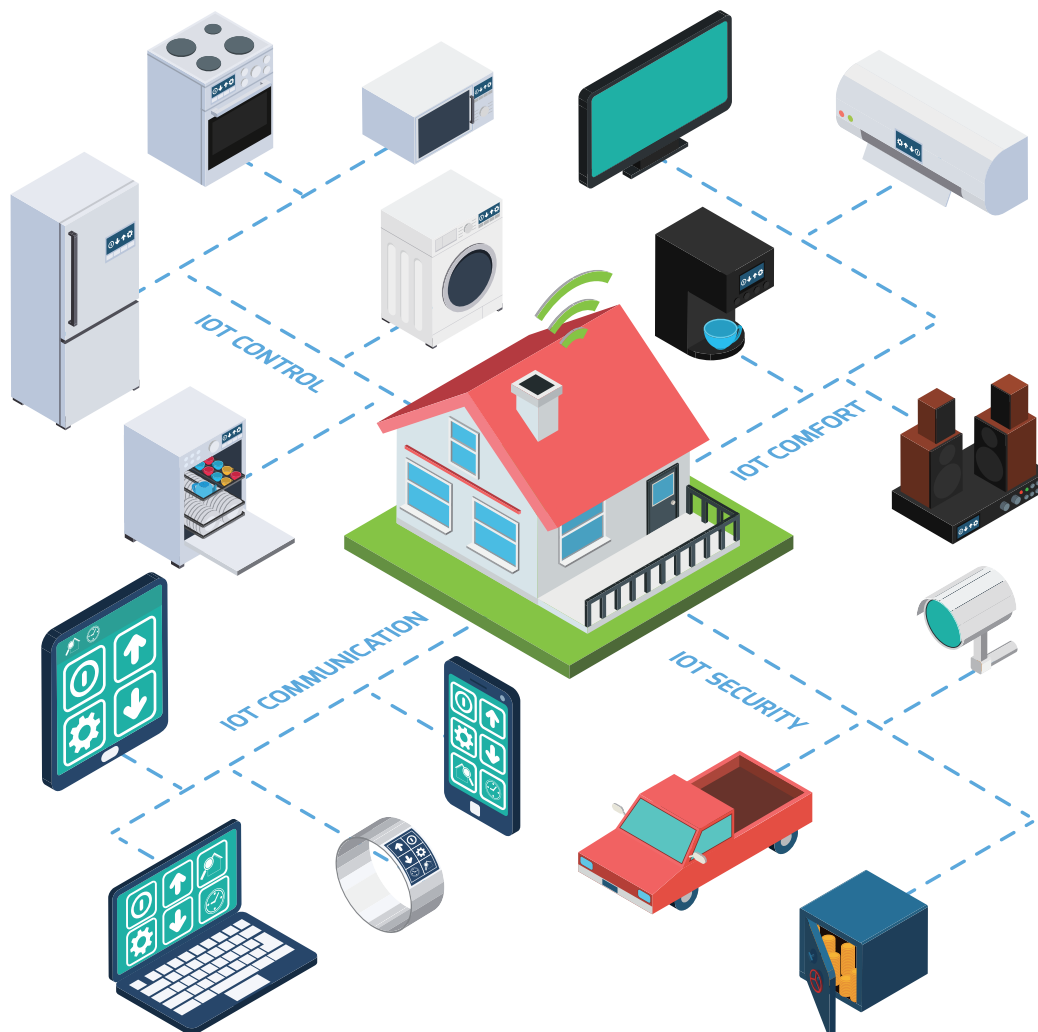
## Install a Z-Wave Hub for One-Touch Automation

No matter where you are, with ENERLITES Z-WAVE, only one touch can help you control every room in your house.

Just add Z-Wave to your garage door, your home entry, and your home security system. When you arrive from work, push a button and all your Z-Wave devices will work in concert -- the garage door will open, your entryways will light up, your security system will recognize you, and your front door will unlock. How's that for remote control?

Once you're inside, your home can welcome you with just the mood you want. A single touch can have your favorite music playing for you on arrival, and the thermostat set to your preferred temperature. While you were away, it made sure the lawn sprinkler watered your lawn on schedule. If it rained, you could have bypassed the sprinkler while at work, from a PC or even a cell phone. When you're ready to call it a night, a single button can turn off your house lights, activate your security system, turn down the thermostat, lock the doors, turn on the bedroom humidifier, and set up the coffee pot to greet you with a fresh cup when you awake.

All with one button. All added easily and inexpensively to your home. All with no new wiring. And all according to your budget and timetables, to meet your needs and your lifestyle. ENERLITES Z-Wave gives you simple, affordable, personalized control solutions.





# ELITE SERIES

The Elite Series from ENERLITES elevates existing controls and devices to unique modern complements. The line includes a variety of decorator switches, tamper-resistant outlets, USB receptacles, combination devices, and screwless wall plates in soft metallic colors.

Choose from gold, silver, dark bronze, and nickel to enhance aesthetics and create a cohesive look all throughout your home or business.

Elite Series products are made from high-quality materials for long-lasting durability and are designed for quick, affordable upgrades in residential and commercial applications.



91150-GD



61501-TR-SV

Decorator Receptacles and Switches	.....	N2
Decorator Combination Devices and USB	.....	N3
Screwless Wall Plates	.....	N4